

# BeTwin VS Quick Start Guide

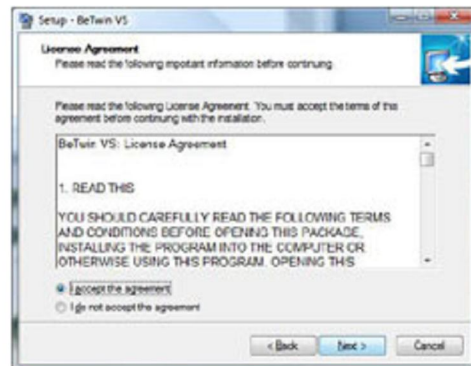
## Important Notes for BeTwin VS Software Installation:

1. Only Windows Vista Home Basic, Home Premium, Business, Ultimate Edition or Windows 7 (32-bit & 64-bit) is supported.
2. Before installing the BeTwin VS software, you must first install the additional PCI/ PCI Express VGA card, monitor, USB mouse and USB keyboard. These are not included with the BeTwin VS software and must be installed separately.
3. The BeTwin VS software should only be installed after the hardware has been successfully installed and tested working correctly.
  - i. Under Windows Display Properties, you must be able to configure the PCI/ PCI-Express VGA card to "Extend my Windows desktop onto this monitor" so that the Windows desktop will be displayed on the Host and Station monitors.
  - ii. The additional USB mouse and keyboard should both be working properly with Windows. For BeTwin VS to work correctly, the Station's USB keyboard and mouse must be using Microsoft native USB keyboard and mouse driver, all third parties keyboard/mouse drivers or utilities need to be uninstalled.
4. After BeTwin VS software has successfully installed and Windows boot up, it will take approximately 90 seconds for the BeTwin Stations to start up.

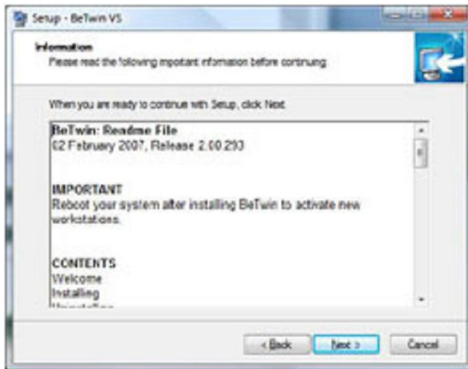
**Step 1** User must log into the computer as an Administrator with full access rights to install BeTwin VS software. After logging into Windows Vista, run the BeTwin VS setup.exe file. Click "**Next**" to proceed.



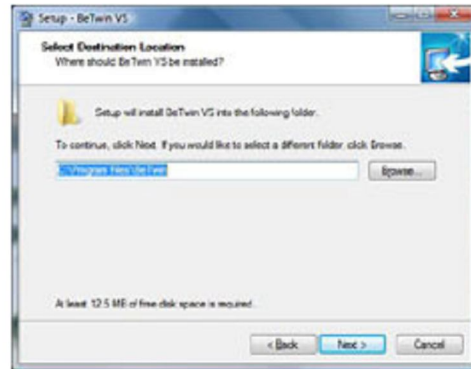
**Step 2** After reading and accepting the license agreement, click on the "**Next**" button to continue with the BeTwin VS software installation.



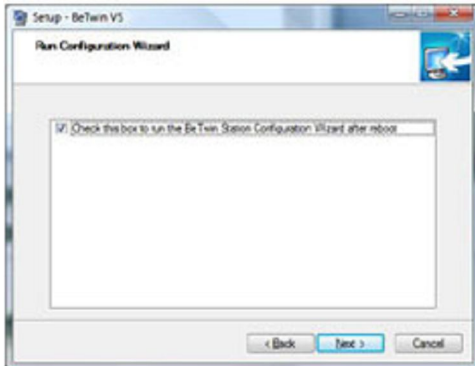
**Step 3** You should see a window similar to the one below. Click on the **"Next"** button.



**Step 4** To install the BeTwin VS software to the default folder, click **"Next"** to proceed.



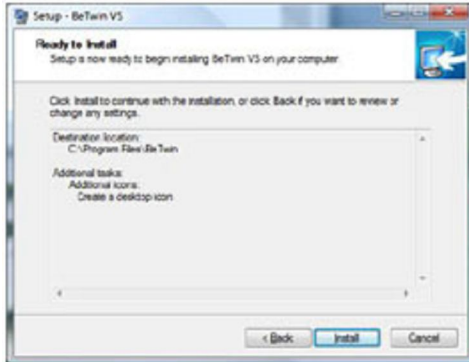
**Step 5** You should see a screen that looks like the one below. Ensure that you have checked the box to run the BeTwin VS Station Configuration Wizard after system reboots.



**Step 6** Select the additional tasks you would like to perform while installing BeTwin VS. Click **"Next"** to proceed.



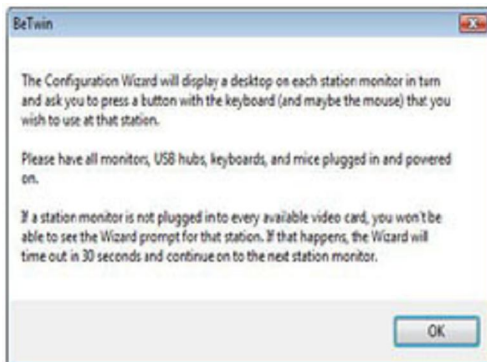
**Step 7** Review the settings. Click **“Install”** to proceed or **“Back”** to modify the settings.



**Step 8** Once the BeTwin VS software is successfully installed, you will be prompted to restart your computer. Click **“Finish”** to complete the setup.



**Step 9** After system reboots to Windows, user must log into the computer as an Administrator with full access rights. You should see a window similar to the one below. Click **“OK”** to proceed with the Configuration Wizard.



**Step 10** When prompted to select the keyboard, you must select **OK** with the keyboard you wish to use for the respective station. When prompted to select the mouse, you must click **OK** with the mouse you wish to use for the respective station. When the Configuration Wizard is completed, you will be prompted to restart Windows (similar to the Window shown below) . Click **“OK”** to complete the Configuration Wizard.



**Important Notes for Internet Registration:**

1. Ensure that you are using the Microsoft's Internet Explorer (32-bit) as the default browser.
2. Make sure you have logged into the Windows Vista or Windows 7 (32-bit & 64-bit) as an Administrator with full access rights.
3. Locate the Internet Explorer (IE) icon in the Windows Quick Launch (next to the Windows Start) or the IE shortcut via Windows Start => All Programs => Internet Explorer. Right-click on the IE shortcut, and then click "Run as administrator". If Windows is in Classic View, click on Windows Start/Programs/Internet Explorer. Right-click on the IE shortcut, and then click "Run as administrator".

Note: Presume that the Windows User Account Control (UAC) is turned on by default.

4. Within Microsoft Internet Explorer (32-bit), click on Tools => Internet => Options => Security => Custom Level. Set the "Reset To:" option to "Medium" and click on the Reset button. Next, click on the "OK" button to apply the changes. This is the required Internet Explorer setting and is what the BeTwin VS Registration page requires in order to successfully work the purchase/registration process.

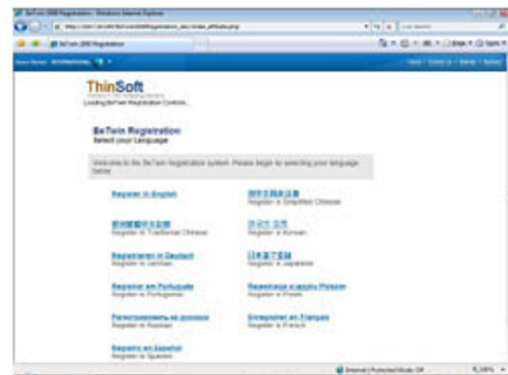
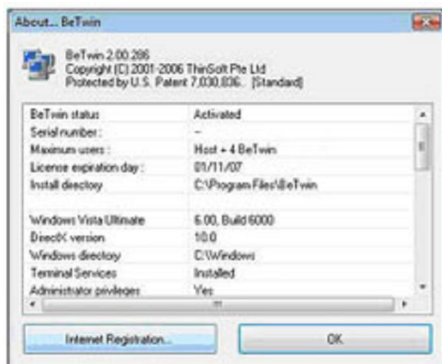
**Notes:**

When prompted to install and run the "ThinSoft ..." and/or the "SheriffNet Module" ActiveX controls, you must click on the "Yes" button to install and run the ActiveX controls.

Please wait for each page to load completely before proceeding to the next page.

**Step 1** On the Windows desktop, right-click on the BeTwin VS Control Center icon and then click "**Run as administrator**". Click on the BeTwin VS Control Center icon located on your desktop. This will launch the BeTwin VS Control Center. First, select **Help** from Control Center menu, and then select **About...** **BeTwin** from the Help Sub-menu. You should see a screen that looks like the one below. Click on the "**Internet Registration...**" button.

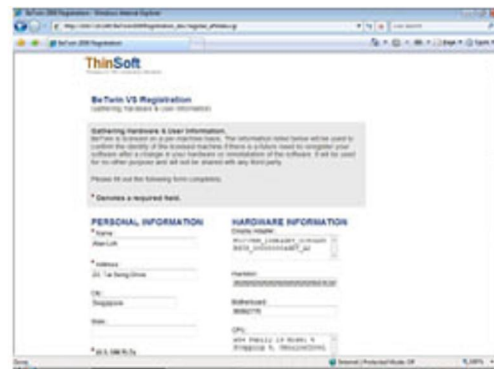
**Step 2** Microsoft Internet Explorer will be launched and directed to the BeTwin VS Registration site. Select the language you wish to use to register BeTwin VS.



**Step 3** If you have purchased BeTwin VS prepaid serial number(s), enter the prepaid serial number(s) and click the **“Register New Serial Numbers”** button.

**Step 4** Enter the information requested and click **“Continue with Registration”**.

If you do not have BeTwin VS prepaid serial number(s) and want to purchase/ register BeTwin VS license online, select the option **“Check this box if you would like to purchase additional user licenses”** and click **“Create New License and Purchase BeTwin”** button.



**Step 5** Once BeTwin VS is successfully registered, you will need to restart Windows.

